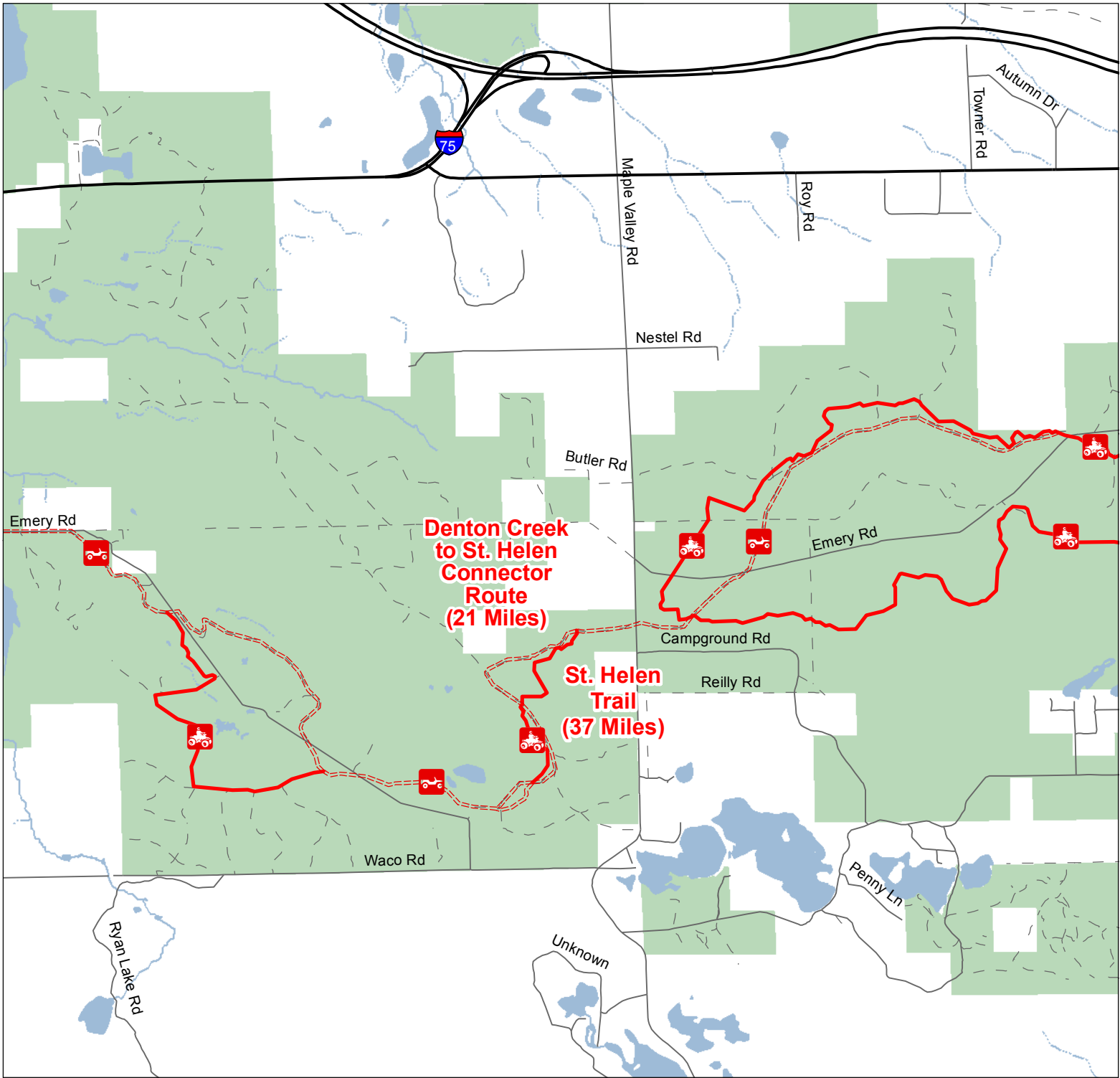










St. Helen Trail & Route West

Roscommon County, Michigan

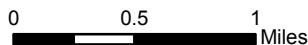


-  ORV Route – ORVs of all sizes including off-road motorcycles. ORV license and trail permit required unless licensed by the Secretary of State.
-  ORV Trail – ORVs 50 inches in width or less including off-road motorcycles. ORV license and trail permit required.

-  Highway
-  Gravel; Paved
-  Poor Dirt
-  Lakes and Rivers
-  State Forest
-  County Boundary



Advisory: Trails and Routes have two-way traffic.
Disclaimer: Trails shown on this map are an approximate representation of the trail system at the time of publication and may not reflect current ground conditions.
STAY ON SIGNED TRAILS ONLY!



Updated 5/07/2014