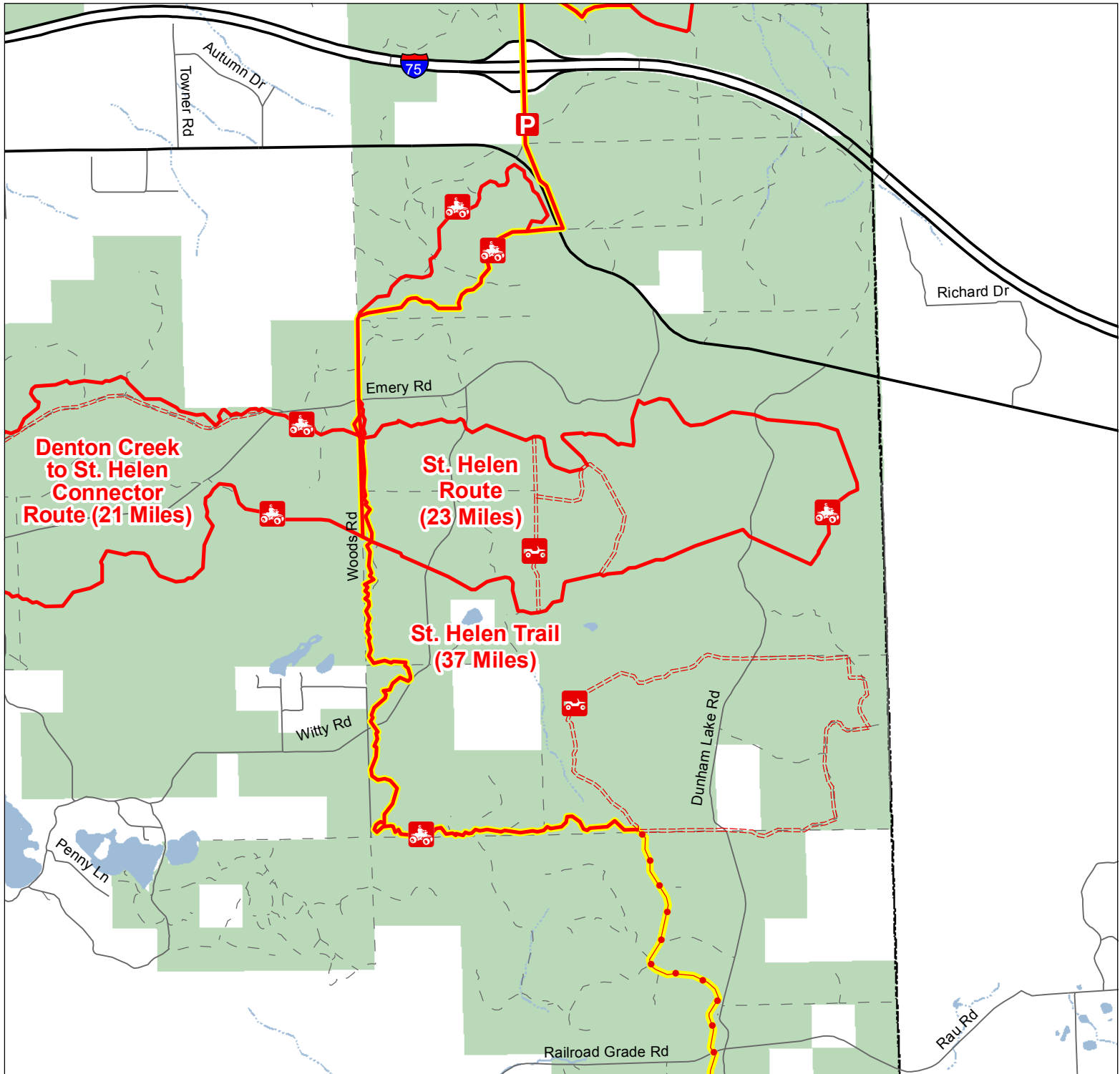


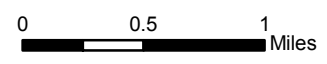
# St. Helen Trail & Route South

Roscommon County, Michigan



- ORV Route – ORVs of all sizes including off-road motorcycles. ORV license and trail permit required unless licensed by the Secretary of State.
- ORV Trail – ORVs 50 inches in width or less including off-road motorcycles. ORV license and trail permit required.
- Motorcycle Trail – Motorcycles only. (Secretary of State license required)
- Michigan Cross Country Cycle Trail (MCCCT)

- Trailhead Parking
- Highway
- Gravel; Paved
- Poor Dirt
- Lakes and Rivers
- State Forest
- County Boundary



Updated 5/07/2014

Advisory: Trails and Routes have two-way traffic.  
 Disclaimer: Trails shown on this map are an approximate representation of the trail system at the time of publication and may not reflect current ground conditions.  
**STAY ON SIGNED TRAILS ONLY!**